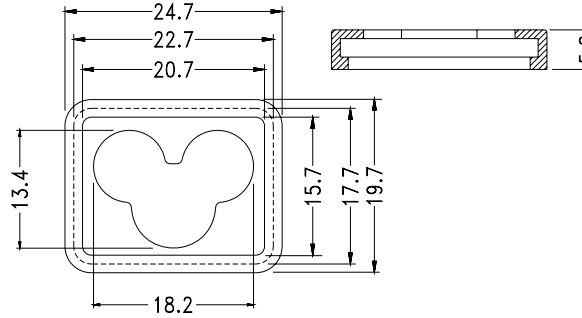


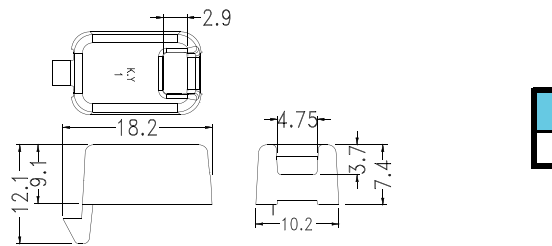
- ◆ MATERIAL: NYLON 66 (UL)
- ◆ FLAME CLASS: 94V-0
- ◆ COLOR: GRAY/BLACK
- ◆ UNIT: mm

PART NO	PACKAGE
CAPX-6	2000



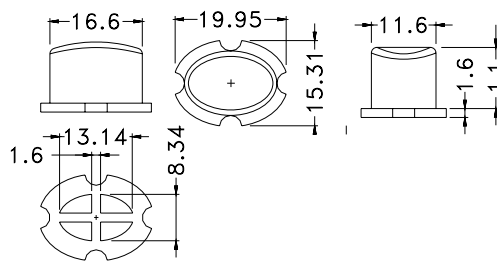
- ◆ MATERIAL: PVC
- ◆ COLOR: TRANSPARENT
- ◆ UNIT: mm

PART NO	PACKAGE
ABSC-2318	1000



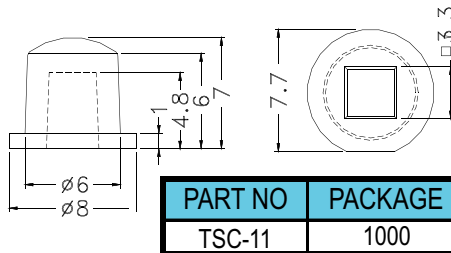
- ◆ MATERIAL: PC (UL)
- ◆ FLAME CLASS: 94V-2
- ◆ COLOR: NATURAL
- ◆ UNIT: mm

PART NO	PACKAGE
CVER-1	1000

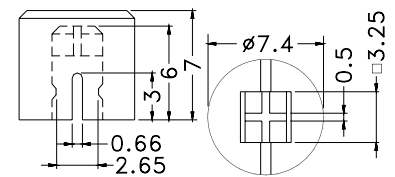


- ◆ MATERIAL: ABS (UL)
- ◆ COLOR: GRAY
- ◆ UNIT: mm

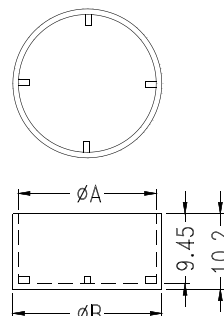
PART NO	PACKAGE
TSC-9	1000



PART NO	PACKAGE
TSC-11	1000

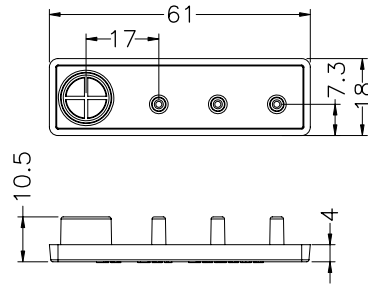


PART NO	PACKAGE
TSC-10	1000



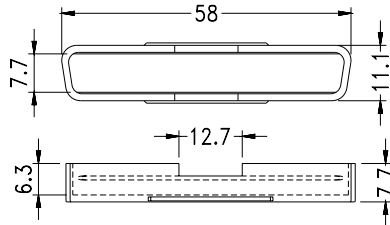
- ◆ MATERIAL: NYLON (UL)
- ◆ FLAME CLASS: 94V-2
- ◆ COLOR: NATURAL
- ◆ UNIT: mm

PART NO	A	B	PACKAGE
BCC-16	16.7	18.2	500
BCC-18	18.7	20.2	



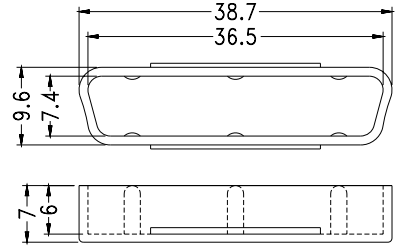
- ◆ MATERIAL:ABS(UL)
- ◆ FLAME CLASS :94HB
- ◆ COLOR:BLACK
- ◆ UNIT:mm

PART NO	PACKAGE
CVR-6118	500

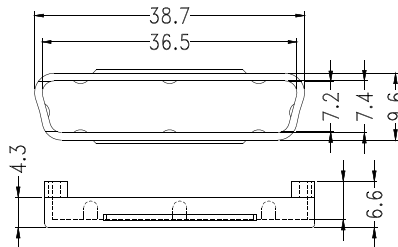


- ◆ MATERIAL:PE
- ◆ COLOR:COMPUTER/BLACK/NATURAL
- ◆ UNIT:mm

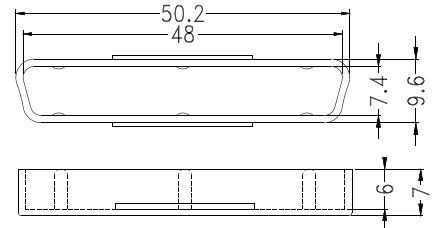
PART NO	PACKAGE
DTC-37M	500



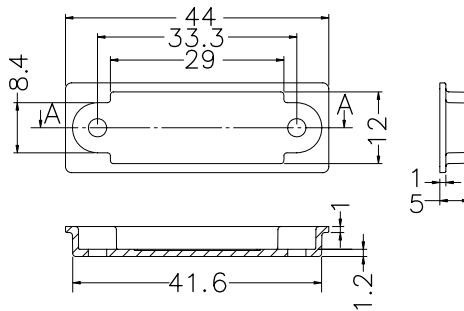
PART NO	PACKAGE
DTC-50M	500



PART NO	PACKAGE
DTC-50S	500

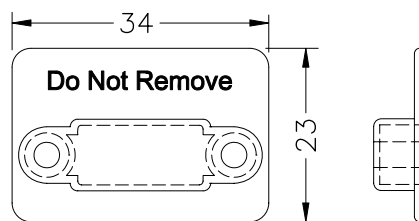


PART NO	PACKAGE
DTC-68M	500

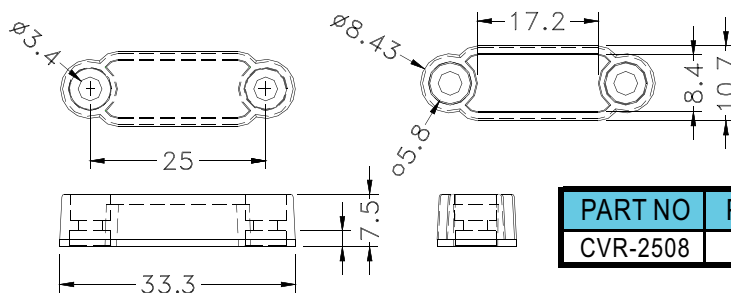


- ◆ MATERIAL:ABS (UL)
- ◆ FLAME CLASS :94HB
- ◆ COLOR:BLACK
- ◆ UNIT:mm

PART NO	PACKAGE
CVR-4415	1000



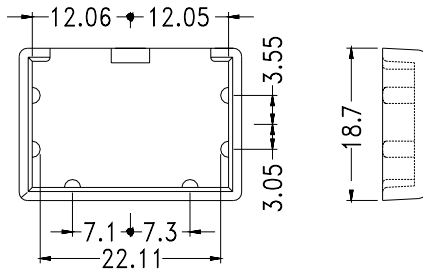
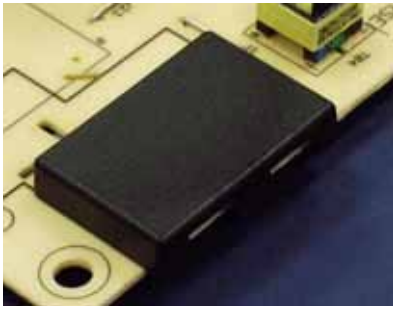
PART NO	PACKAGE
CVR-3423	1000



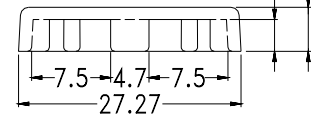
PART NO	PACKAGE
CVR-2508	1000

Electronic component - Covers

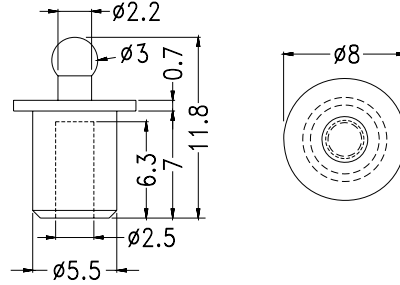
Hankook Fastener



- ◆ MATERIAL: NYLON 66 (UL)
- ◆ FLAME CLASS: 94V-0
- ◆ COLOR: BLACK
- ◆ UNIT: mm

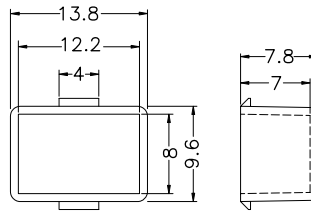
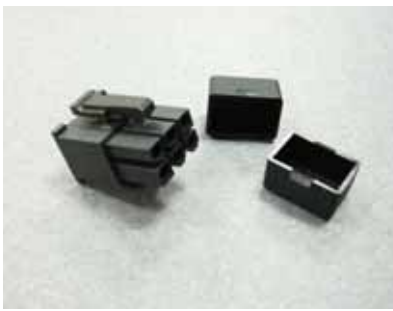


PART NO	PACKAGE
CDEL3-3	500



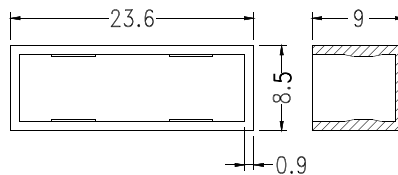
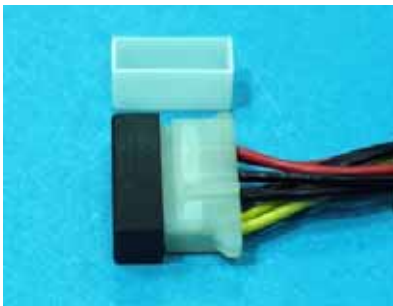
- ◆ MATERIAL: RUBBER
- ◆ COLOR: BLACK
- ◆ UNIT: mm

PART NO	PACKAGE
JKCV-1	1000

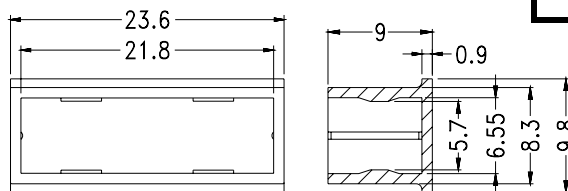
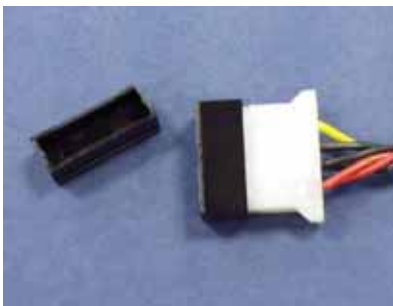


- ◆ MATERIAL: NYLON 66 (UL)
- ◆ FLAME CLASS: 94V-2
- ◆ COLOR: BLACK
- ◆ UNIT: mm

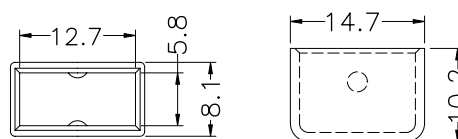
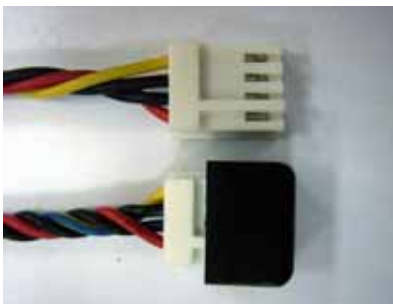
PART NO	PACKAGE
VGAB-1	1000



PART NO	PACKAGE
FHC-1	500



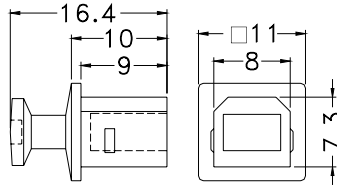
PART NO	PACKAGE
FHC-2	500



PART NO	PACKAGE
FHC-3	1000



USB Housing

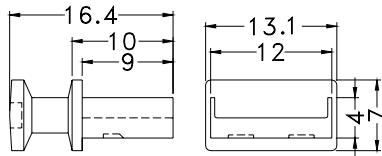


- ◆ MATERIAL:ABS(UL)
- ◆ FLAME CLASS:94HB
- ◆ COLOR:BLACK
- ◆ UNIT:mm

PART NO	PACKAGE
USBC-1	1000



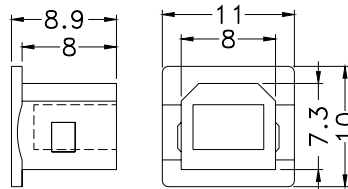
USB Housing



PART NO	PACKAGE
USBC-2	1000

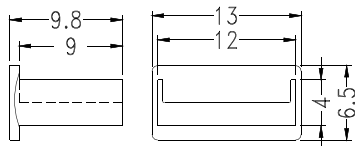


USB Housing



- ◆ MATERIAL:PP
- ◆ COLOR:BLACK
- ◆ UNIT:mm

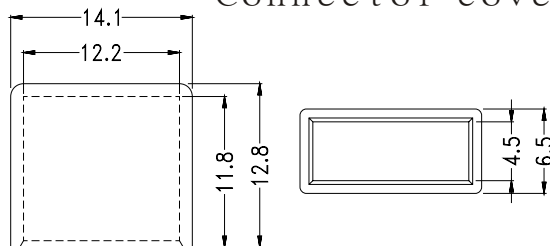
PART NO	PACKAGE
USBC-3	1000



PART NO	PACKAGE
USBC-4	1000

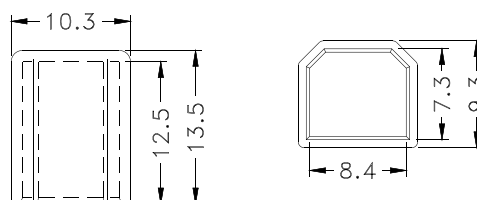


Connector cover



- ◆ MATERIAL:PE
- ◆ COLOR:NATURAL
- ◆ UNIT:mm

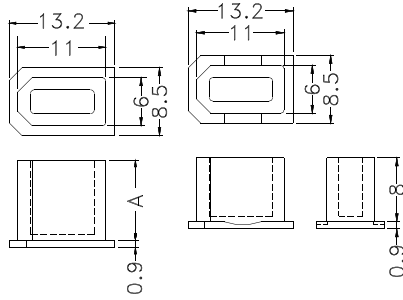
PART NO	PACKAGE
KPS-6	1000



PART NO	PACKAGE
KPS-5	1000



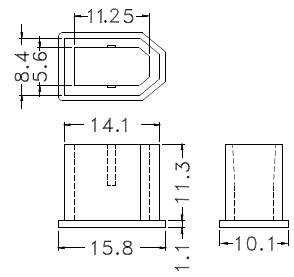
- ◆ MATERIAL:PE
- ◆ COLOR:BLACK/DARK GRAY
- ◆ UNIT:mm



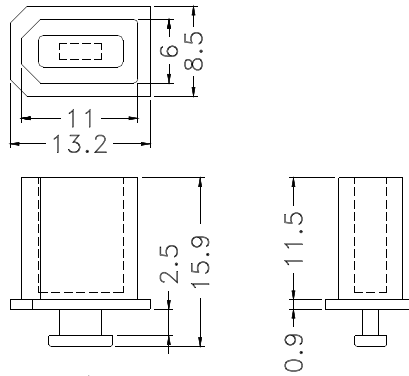
PART NO	A	PACKAGE
★CVR-1394-2	10.0	1000
★CVR-1394-3	11.5	

PART NO	PACKAGE
CVR-1394	1000

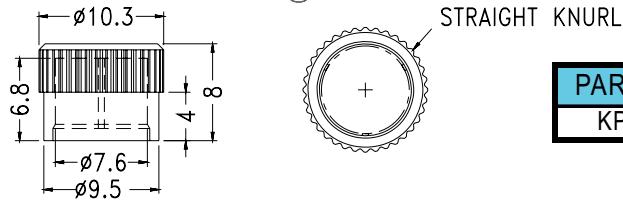
- ◆ MATERIAL:P.P(UL)
- ◆ FLAME CLASS:94V-2
- ◆ COLOR:GRAY



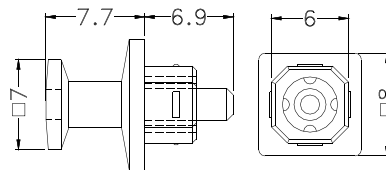
PART NO	PACKAGE
CVR-1394-1	1000



PART NO	PACKAGE
CVR-1394S	1000

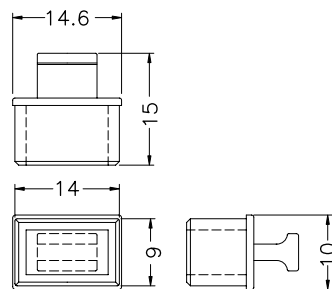


PART NO	PACKAGE
KPS-4	1000



- ◆ MATERIAL:ABS(UL)
- ◆ FLAME CLASS :94HB
- ◆ COLOR:BLACK
- ◆ UNIT:mm

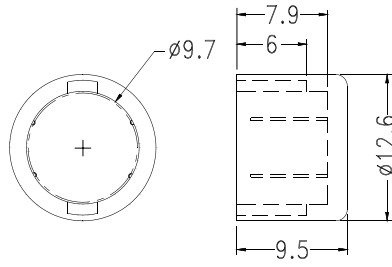
PART NO	PACKAGE
OPC-1	1000



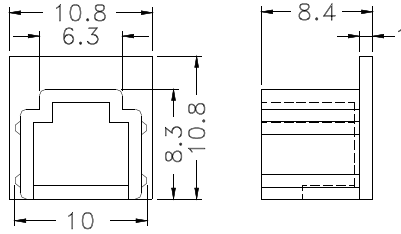
- ◆ MATERIAL:PE
- ◆ COLOR:BLACK
- ◆ UNIT:mm

PART NO	PACKAGE
SFPC-1	500

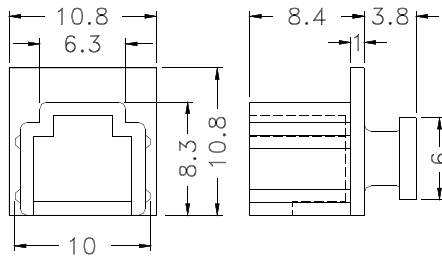
- ◆ MATERIAL:PE
- ◆ COLOR:BLACK/GRAY
- ◆ UNIT:mm



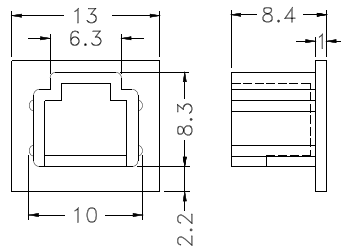
PART NO	PACKAGE
BNC-2	1000



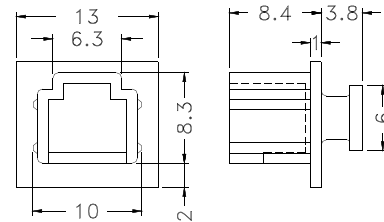
PART NO	PACKAGE
CRJ-11	1000



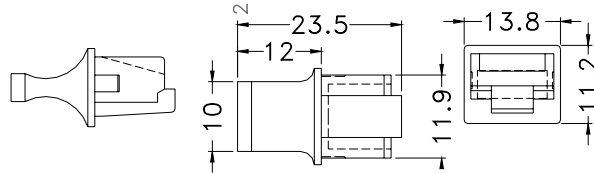
PART NO	PACKAGE
CRJ-11S	1000



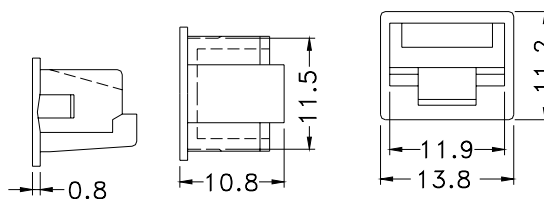
PART NO	PACKAGE
CRJ-11-2	1000



PART NO	PACKAGE
CRJ-11-2S	1000



PART NO	PACKAGE
PJC-45	500



PART NO	PACKAGE
PJS-45	500